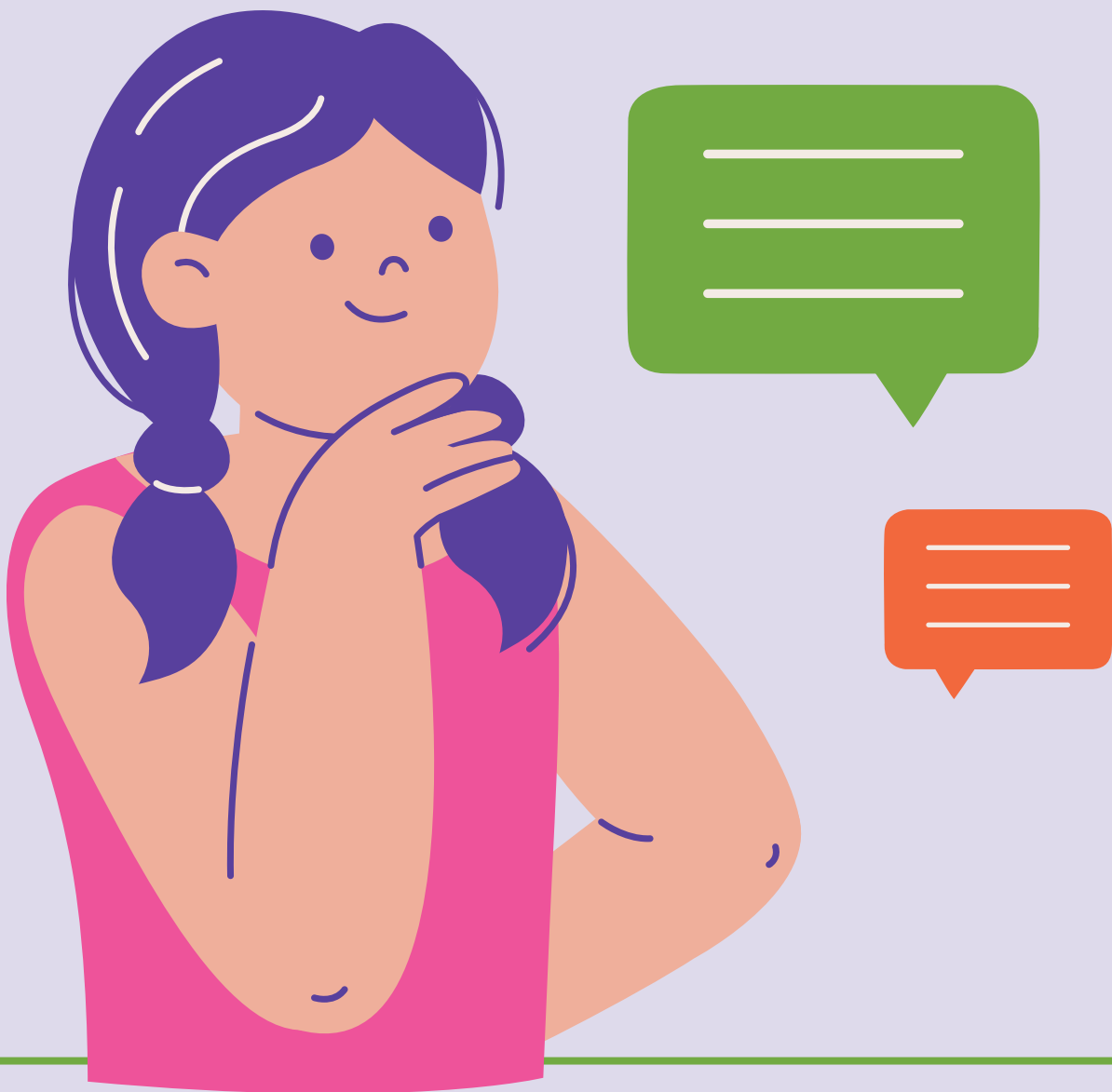


Speech And Language!

Lets Break It Down



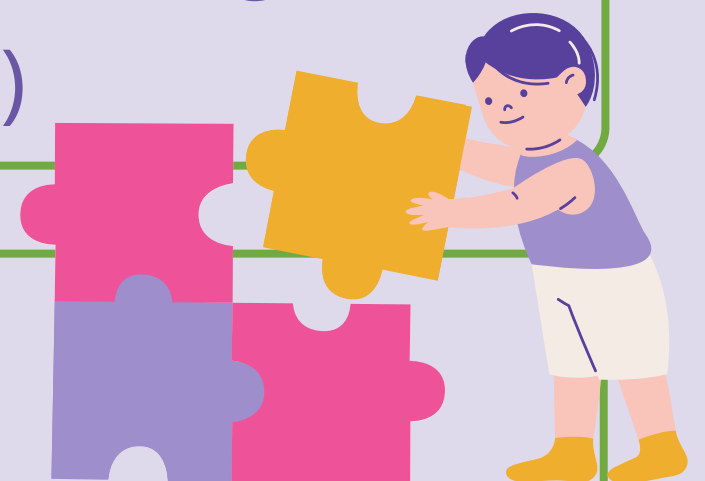
Speech = Sounds! Can you say it clearly and smoothly?

- Making sounds (articulation)
- Using your voice
- Talking without getting stuck (fluency)



Language = Meaning! Can you understand and share ideas?

- Understanding words (receptive)
- Putting words together (expressive)
- Using words in the right way (social use)



They work together... but aren't the same!

You can say words clearly but not understand them or Understand everything but have trouble saying it.



Do you need help?

Speech-Language Pathologists are here to help with both speech and language challenges!

Better Communication Brighter Futures!